



Rab 18 Polyclonal Antibody

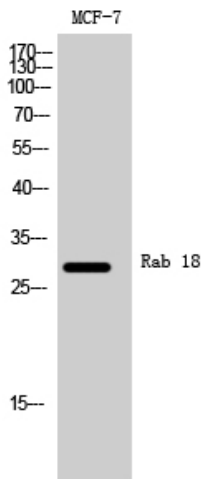
Catalog No	YP-Ab-16188
Isotype	IgG
Reactivity	Human;Mouse;Rat
Applications	WB;ELISA;IHC
Gene Name	RAB18
Protein Name	Ras-related protein Rab-18
Immunogen	The antiserum was produced against synthesized peptide derived from human RAB18. AA range:103-152
Specificity	Rab 18 Polyclonal Antibody detects endogenous levels of Rab 18 protein.
Formulation	Liquid in PBS containing 50% glycerol, 0.5% BSA and 0.02% sodium azide.
Source	Polyclonal, Rabbit,IgG
Purification	The antibody was affinity-purified from rabbit antiserum by affinity-chromatography using epitope-specific immunogen.
Dilution	WB 1:500-2000;IHC-p 1:50-300; ELISA 2000-20000
Concentration	1 mg/ml
Purity	≥90%
Storage Stability	-20°C/1 year
Synonyms	RAB18; Ras-related protein Rab-18
Observed Band	28kD
Cell Pathway	Apical cell membrane . Lipid droplet .
Tissue Specificity	Ubiquitous.
Function	function:Plays a role in apical endocytosis/recycling. May be implicated in transport between the plasma membrane and early endosomes.,similarity:Belongs to the small GTPase superfamily. Rab family.,tissue specificity:Ubiquitous.,
Background	The protein encoded by this gene is a member of a family of Ras-related small GTPases that regulate membrane trafficking in organelles and transport vesicles. Knockdown studies in zebrafish suggest that this protein may have a role in eye and brain development. Mutations in this gene are associated with Warburg micro syndrome type 3. Alternatively spliced transcript variants have been found for this gene. [provided by RefSeq, Jan 2012],
matters needing attention	Avoid repeated freezing and thawing!



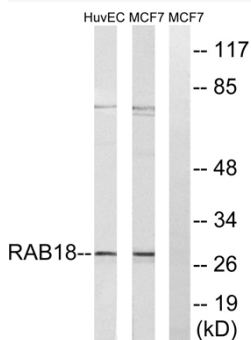
Usage suggestions

This product can be used in immunological reaction related experiments. For more information, please consult technical personnel.

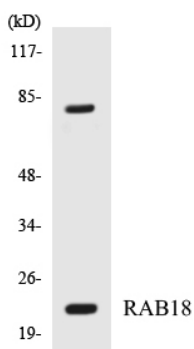
Products Images



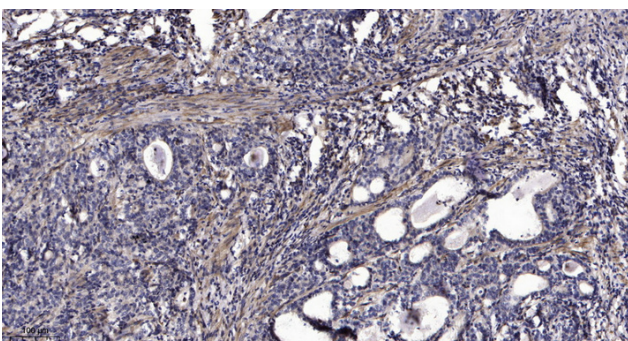
Western Blot analysis of MCF-7 cells using Rab 18 Polyclonal Antibody



Western blot analysis of lysates from MCF-7 and HUVEC cells, using RAB18 Antibody. The lane on the right is blocked with the synthesized peptide.



Western blot analysis of the lysates from HepG2 cells using RAB18 antibody.



Immunohistochemical analysis of paraffin-embedded human Gastric adenocarcinoma. 1, Antibody was diluted at 1:200(4° overnight). 2, Tris-EDTA, pH9.0 was used for antigen retrieval. 3, Secondary antibody was diluted at 1:200(room temperature, 45min).